

JOLLYNOX

Jollynox Catalogue 2023/24



JOLLYNOX

**Jollynox Catalogue 2023/24
sinks, hobs, taps and accessories**



Jollynox makes for a sublime innovative and functional kitchen design, while respecting the planet.

Design
Innovation
Eco-sustainability
Safety



Jollynox products originate in the "inox valley", a world-famous Italian production district and the home of stainless steel.

1968

jollynox

JOLLYNOX



Present day

JOLLYNOX



1968
Jollynox
founded

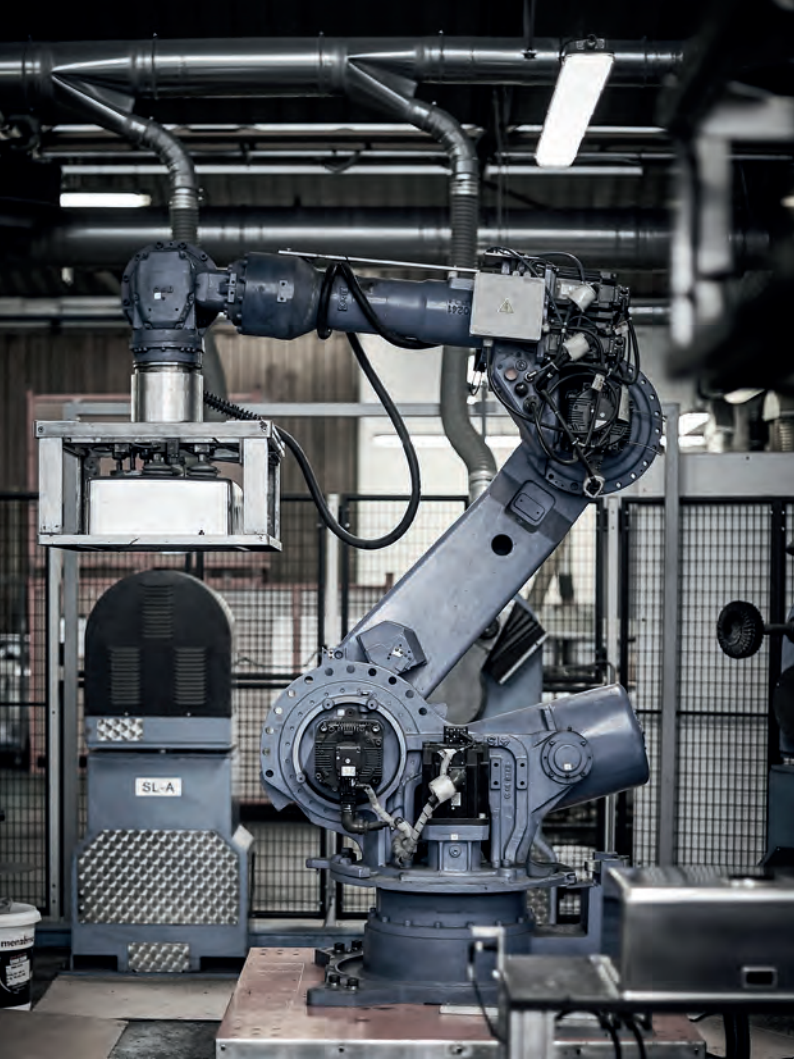


ABOUT US

First family workshop



Jollynox is synonymous with quality materials, attention to detail and eco-sustainability. By carefully researching aesthetics and functionality, we have created products that have a long history. Jollynox is a Barazza brand. Barazza was founded in 1968 as an industrious family workshop. Over time and through the generations, it has grown to become a leading light in the kitchen appliances and sinks sector. Jollynox expresses its values – experience, innovation, technology and attention to new trends – through its sleek, versatile products, designed to fit the most diverse interior contexts, to meet all your everyday needs and wishes. Choosing Jollynox means counting on a comprehensive, timely service, thanks to a widespread network of service centres – this, too, is quality of life in the kitchen.



All Jollynox products are designed and manufactured as part of a quality-oriented process, using ultra-modern production systems which alternate with stages of finishing, assembly and manual inspections. Humans and technology are two key elements. They are what bring out the intrinsic qualities of the raw materials.





UNI EN ISO 9001 and 14001 certifications guarantee ongoing product control, pollution prevention and responsible use of energy and natural resources.





Jollynox uses only high-quality stainless steel: the quintessential durable, sustainable raw material.

OUR MATERIALS

Jollynox chooses all of its raw materials very carefully. The stainless steel used for Jollynox products offers superior qualities in terms of its resistance, inalterability, hygiene and safety. At the end of its lifecycle, it can be fully recycled, making it an excellent example of an environmentally sustainable material. It makes for beautiful kitchen aesthetics and practical finishes, and it's also better for the planet.

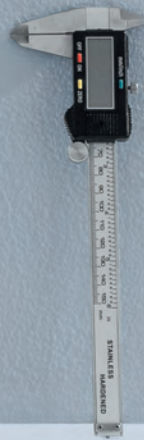
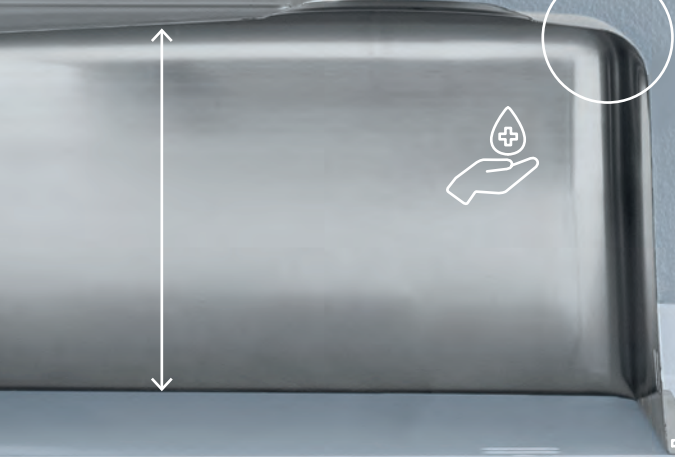




Aesthetics and durability
are non-negotiable for every
Jollynox product and detail.

WHY CHOOSE JOLLYNOX

Jollynox uses high-quality stainless steel with an even thickness, to ensure maximum strength. Products are processed with the utmost care and attention to ensure the final result is of high quality and provides long-term satisfaction. Durable is also eco-friendly.





PRODUCTS

index

- p 18 Sinks and bowls
- p 58 Hobs
- p 74 Taps and accessories





FULL JOLLYNOX
RANGE

From sinks to hobs, and taps to accessories, with Jollynox's product range you can build diverse designs and compositions. Create a coherent style that's versatile too, completing and adding to both traditionally inspired spaces and those with a contemporary feel.





FOR A STUNNING KITCHEN
THAT'S SAFE TOO

It's not all about the aesthetics. Or the functional features. We care about safety, providing solutions that protect both adults and children. We owe it to those who choose Jollynox to furnish the most vibrant, bustling room in the house.



Sinks

Bowls

LIFE

page 27



VEGA

page 35



BIG

page 41



JOY

page 45



LIFE COMBI

page 30



VEGA COMBI

page 38



JOY COMBI

page 46



R.25

page 51



R.25 COMBI

page 52



UNDERMOUNTED BOWLS

page 55



CIRCULAR BOWLS

page 57



Hobs

Mixer taps and accessories

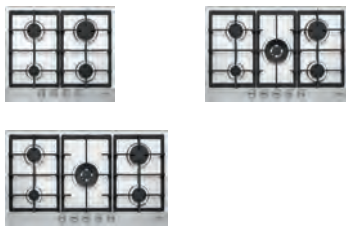
VEGA

page 65



VEGA PLUS

page 66



INDUCTION

page 73



MIXER TAPS

page 81



ACCESSORIES

page 88





Different styles, sizes and solutions for a kitchen essential.

SINKS AND BOWLS





ACCESSORIES

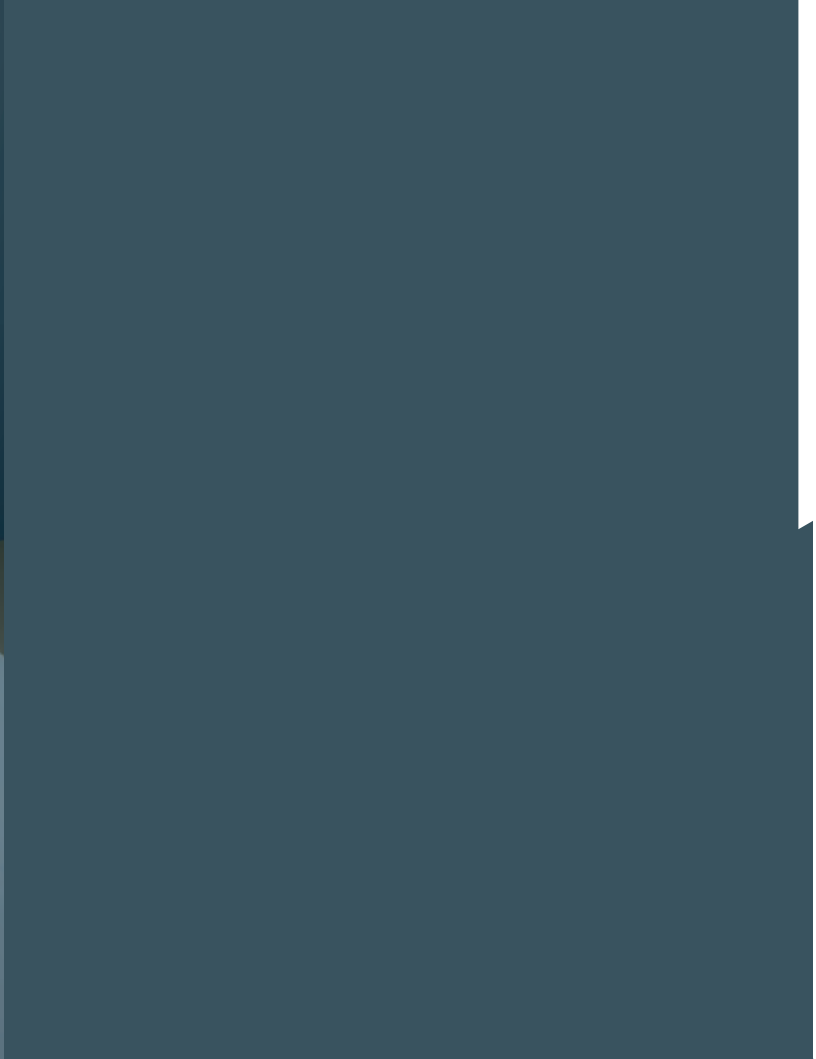
Sink areas are multifunctional and need a comprehensive range of matching accessories: from wooden Iroko, HPL or polyethylene chopping boards to colanders, including a food waste disposer that halves the quantity of food waste, making waste disposal easier and more eco-friendly.

The pop-up plug, available for selected models, means you can empty the bowl without having to put your hands inside it.

BUILD

Jollynox bowls and sinks are highly capacious and perfectly soundproofed. Sink models with a drainer have deep grooves to ensure water drains away freely.





MATERIALS

Jollynox sinks are made of high-quality, long-lasting stainless steel or J-Granito, a material combining the natural aesthetics of stone with the strength of polymers.



Sinks and bowls base

BASE

LIFE
built-in



page 27



page 27



page 28

LIFE COMBI
built-in



page 30

VEGA
built-in



page 35



page 36

VEGA COMBI
built-in



page 38

BIG
built-in

JOY
built-in

JOY COMBI
built-in

R. 25
built-in and
undermounted

R. 25 COMBI
built-in and
undermounted

**UNDERMOUNTED
BOWLS**
undermounted

**CIRCULAR
BOWLS**
built-in



page 55



pag. 57



pag. 57

50 / 60



page 35



page 36



page 41



page 45



page 46



page 51

built-in and
undermounted



page 51

built-in



page 52

built-in and
undermounted



page 52

built-in



page 55

80



page 27



page 28



page 30



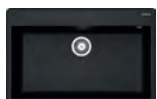
page 35



page 37



page 38



page 45



page 46



page 51

undermounted



page 51

built-in



page 52

undermounted



page 52

built-in

90



page 28



page 30



page 36



page 37



page 38



page 51

undermounted



page 52

undermounted



Different sizes to fit any context, with an originally designed drainer.

LIFE SINKS



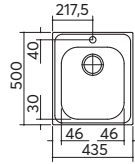




built-in st. steel
43.5x50
1 bowl

ACCESSORIES:
1 2 5 6 11

basket strainer waste: 3.5"
equipment: seals, fixing clips, overflow, basket strainer waste and plug
bowl size: 1 bowl 34x39x18 h
features: lowered edge
base unit for bowls: 45
cutout for top: 41.5x48



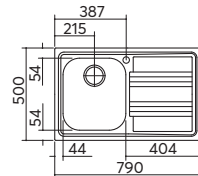
st. steel 1LLF453K



built-in st. steel
79x50
1 bowl + drainer

ACCESSORIES:
1 2 5 6 11

basket strainer waste: 3.5"
equipment: seals, fixing clips, overflow, basket strainer waste and plug
bowl size: 1 bowl 34x39x18 h
features: lowered edge
base unit for bowls: 45
cutout for top: 77x48



rh drainer - st. steel 1LLF80/1D3K

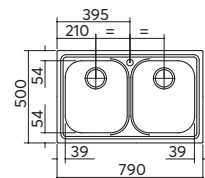
lh drainer - st. steel 1LLF80/1S3K



built-in st. steel
79x50
2 bowls

ACCESSORIES:
1 2 5 6 11

basket strainer waste: 3.5"
equipment: seals, fixing clips, overflow, basket strainer waste and plug
bowl size: 2 bowls 34x39x18 h
features: lowered edge
base unit for bowls: 80
cutout for top: 77x48



st. steel 1LLF80/23K

Sinks

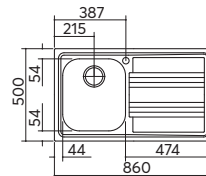
Life



built-in st. steel
86x50
1 bowl + drainer

ACCESSORIES:
1 2 5 6 11

basket strainer waste: 3.5"
equipment: seals, fixing clips, overflow, basket strainer waste and plug
bowl size: 1 bowl 34x39x18 h
features: lowered edge
base unit for bowls: 45
cutout for top: 84x48



rh drainer - st. steel 1LLF90/1D3K

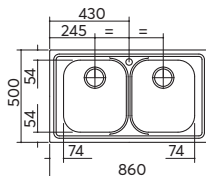
lh drainer - st. steel 1LLF90/1S3K



built-in st. steel
86x50
2 bowls

ACCESSORIES:
1 2 5 6 11

basket strainer waste: 3.5"
equipment: seals, fixing clips, overflow, basket strainer waste and plug
bowl size: 2 bowls 34x39x18 h
features: lowered edge
base unit for bowls: 90
cutout for top: 84x48



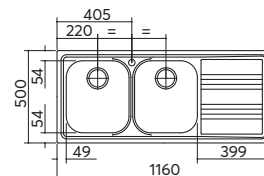
st. steel 1LLF90/23K



built-in st. steel
116x50
2 bowls + drainer

ACCESSORIES:
1 2 5 6 11

basket strainer waste: 3.5"
equipment: seals, fixing clips, overflow, basket strainer waste and plug
bowl size: 2 bowls 34x39x18 h
features: lowered edge
base unit for bowls: 80
cutout for top: 114x48



rh drainer - st. steel 1LLF120/2D3K

lh drainer - st. steel 1LLF120/2S3K

ACCESSORIES



Iroko chopping board

1TRE



Polyethylene chopping board

1TREP



Polished stainless steel basket

1CREI



Polished stainless steel basket

1CREIM



Stainless steel perforated bowl cover

1CI91

Sinks have a 1-way or 2-way trap with dishwasher connection and cardboard packaging. The mixer tap is not included.

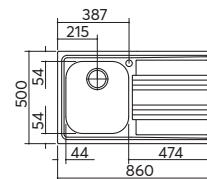




built-in st. steel
86x50
1 bowl + drainer with Life mixer tap

ACCESSORIES:
1 2 5 6 11

basket strainer waste: 3.5"
equipment: chrome mixer tap Life 1RUBLF, seals, fixing clips, overflow, basket strainer waste and plug
bowl size: 1 bowl 34x39x18 h
features: lowered edge
base unit for bowls: 45
cutout for top: 84x48



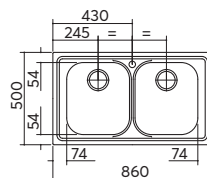
rh drainer - st. steel	1LLFC91D
lh drainer - st. steel	1LLFC91S



built-in st. steel
86x50
2 bowls with Life mixer tap

ACCESSORIES:
1 2 5 6 11

basket strainer waste: 3.5"
equipment: chrome mixer tap Life 1RUBLF, seals, fixing clips, overflow, basket strainer waste and plug
bowl size: 2 bowls 34x39x18 h
features: lowered edge
base unit for bowls: 90
cutout for top: 84x48



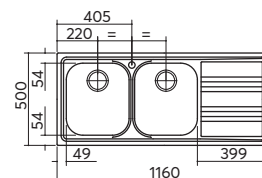
st. steel	1LLFC92
-----------	---------



built-in st. steel
116x50
2 bowls + drainer with Life mixer tap

ACCESSORIES:
1 2 5 6 11

basket strainer waste: 3.5"
equipment: chrome mixer tap Life 1RUBLF, seals, fixing clips, overflow, basket strainer waste and plug
bowl size: 2 bowls 34x39x18 h
features: lowered edge
base unit for bowls: 80
cutout for top: 114x48



rh drainer - st. steel	1LLFC12D
lh drainer - st. steel	1LLFC12S

ACCESSORIES



Iroko chopping board

1TRE



Polyethylene chopping board

1TREP



Polished stainless steel basket

1CREI



Polished stainless steel basket

1CREIM



Stainless steel perforated bowl cover

1CI91

Sinks have a 1-way or 2-way trap with dishwasher connection and cardboard packaging.





A wide range of versatile sizes to suit kitchens large and small.

VEGA SINKS



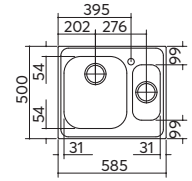




built-in st. steel
58.5x50
1 and a half bowls

ACCESSORIES:
1 2 5 6 11

basket strainer waste: 3.5"
equipment: seals, fixing clips, overflow, basket strainer waste and plug
bowl size: 1 bowl 34x39x21 h + 1 bowl 15x30x16.5 h
base unit for bowls: 60
cutout for top: 56x48



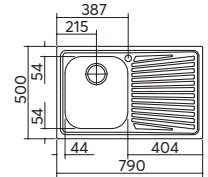
st. steel 1160K



built-in st. steel
79x50
1 bowl + drainer

ACCESSORIES:
1 2 5 6 11

basket strainer waste: 3.5"
equipment: seals, fixing clips, overflow, basket strainer waste and plug
bowl size: 1 bowl 34x39x21 h
base unit for bowls: 45
cutout for top: 77x48



rh drainer - st. steel 1180/1.91DK

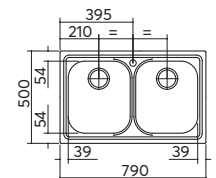
lh drainer - st. steel 1180/1.91SK



built-in st. steel
79x50
2 bowls

ACCESSORIES:
1 2 5 6 11

basket strainer waste: 3.5"
equipment: seals, fixing clips, overflow, basket strainer waste and plug
bowls size: 2 bowls 34x39x21 h
base unit for bowls: 80
cutout for top: 77x48



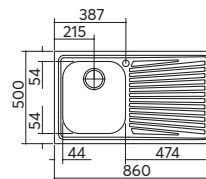
st. steel 1180/2.91K



built-in st. steel
86x50
1 bowl + drainer

ACCESSORIES:
1 2 5 6 11

basket strainer waste: 3.5"
equipment: seals, fixing clips, overflow, basket strainer waste and plug
bowl size: 1 bowl 34x39x21 h
base unit for bowls: 45
cutout for top: 84x48



rh drainer - st. steel 1190/191DK

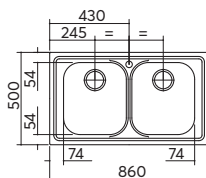
lh drainer - st. steel 1190/191SK



built-in st. steel
86x50
2 bowls

ACCESSORIES:
1 2 5 6 11

basket strainer waste: 3.5"
equipment: seals, fixing clips, overflow, basket strainer waste and plug
bowls size: 2 bowls 34x39x21 h
base unit for bowls: 90
cutout for top: 84x48



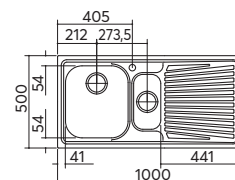
st. steel 1190/291K



built-in st. steel
100x50
1 and a half bowls + drainer

ACCESSORIES:
1 2 5 6 11

basket strainer waste: 3.5"
equipment: seals, fixing clips, overflow, basket strainer waste and plug
bowls size: 1 bowl 34x39x21 h + 1 bowl 15x30x16.5 h
base unit for bowls: 60
cutout for top: 98x48



rh drainer - st. steel 11100DK

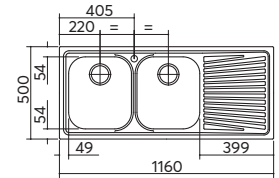
lh drainer - st. steel 11100SK



built-in st. steel
116x50
2 bowls + drainer

ACCESSORIES:
1 2 5 6 11

basket strainer waste: 3.5"
equipment: seals, fixing clips, overflow, basket strainer waste and plug
bowls size: 2 bowls 34x39x21 h
base unit for bowls: 80
cutout for top: 114x48



rh drainer - st. steel 11120/2.91DK

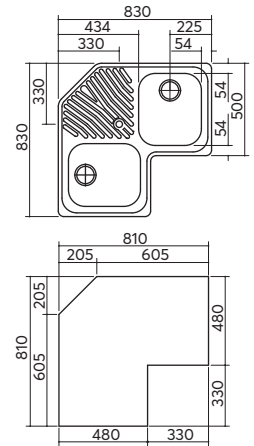
lh drainer - st. steel 11120/2.91SK



built-in st. steel
83x83
2 corner bowls + drainer

ACCESSORIES:
1 2 5 6 11

basket strainer waste: 3.5"
equipment: seals, fixing clips, overflow, basket strainer waste and plug
bowls size: 2 bowls 34x39x21 h
base unit for bowls: 90x90



st. steel 119090/2.913

ACCESSORIES



Iroko chopping board

1TRE



Polyethylene chopping board

1TREP



Polished stainless steel basket

1CREI



Polished stainless steel basket

1CREIM



Stainless steel perforated bowl cover

1CI91

Sinks have a 1-way or 2-way trap with dishwasher connection and cardboard packaging. The sinks with 1 and a half bowls, 83x83, are equipped with a 2-way space-saver trap with dishwasher connection and cardboard packaging. The mixer tap is not included.

Sinks

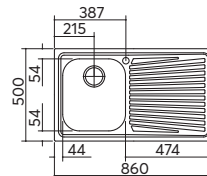
Vega Combi



built-in st. steel
86x50
1 bowl + drainer with Ring mixer tap

ACCESSORIES:
1 2 5 6 11

basket strainer waste: 3.5"
equipment: chrome mixer tap Ring 1RUBRG, seals, fixing clips, overflow, basket strainer waste and plug
bowl size: 1 bowl 34x39x21 h
base unit for bowls: 45
cutout for top: 84x48



rh drainer - st. steel 1LVGC91D

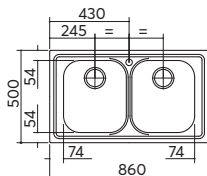
lh drainer - st. steel 1LVGC91S



built-in st. steel
86x50
2 bowls with Ring mixer tap

ACCESSORIES:
1 2 5 6 11

basket strainer waste: 3.5"
equipment: chrome mixer tap Ring 1RUBRG, seals, fixing clips, overflow, basket strainer waste and plug
bowls size: 2 bowls 34x39x21 h
base unit for bowls: 90
cutout for top: 84x48



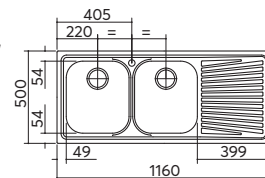
st. steel 1LVGC92



built-in st. steel
116x50
2 bowls + drainer with Ring mixer tap

ACCESSORIES:
1 2 5 6 11

basket strainer waste: 3.5"
equipment: chrome mixer tap Ring 1RUBRG, seals, fixing clips, overflow, basket strainer waste and plug
bowls size: 2 bowls 34x39x21 h
base unit for bowls: 80
cutout for top: 114x48



rh drainer - st. steel 1LVGC12D

lh drainer - st. steel 1LVGC12S

ACCESSORIES



Iroko chopping board

1TRE



Polyethylene chopping board

1TREP



Polished stainless steel basket

1CREI



Polished stainless steel basket

1CREIM



Stainless steel perforated bowl cover

1CI91

Sinks have a 1-way or 2-way trap with dishwasher connection and cardboard packaging.



BIG SINKS

A deep, capacious,
semi-professional bowl
that becomes the main
protagonist in the kitchen.



Sink

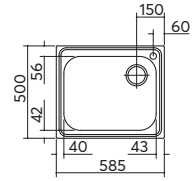
Big



built-in st. steel
58.5x50
1 bowl

ACCESSORIES:
6 7

basket strainer waste: 3.5"
equipment: seals, fixing clips, overflow, basket strainer waste and plug
bowl size: 1 bowl 50x40x21.5 h
base unit for bowls: 60
cutout for top: 56x48



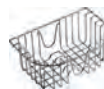
st. steel

1160/1K



ACCESSORIES

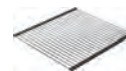
6



Polished stainless steel basket

1CREIM

7



Roll-Up multi-purpose stainless steel rack

1GSPA

The sink is equipped with a 1-way trap with dishwasher connection and cardboard packaging. The mixer tap is not included.



Nature meets technology
in an elegantly minimalist
design with a strong
contemporary feel.

JOY SINKS



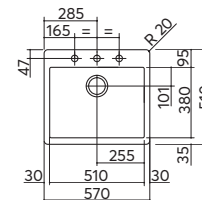




built-in J-Granito
57x51
1 bowl

ACCESSORIES:
7

basket strainer waste: 3"¹/₂
equipment: fixing clips, overflow, basket strainer waste and plug
bowl size: 1 bowl 51x38x20 h
tap hole: designed for 3 holes
base unit for bowls: 60
cutout for top: 55x48



black J-Granito

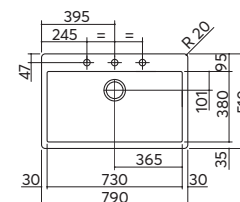
1VJ61N



built-in J-Granito
79x51
1 bowl

ACCESSORIES:
7

basket strainer waste: 3"¹/₂
equipment: fixing clips, overflow, basket strainer waste and plug
bowl size: 1 bowl 73x38x20 h
tap hole: designed for 3 holes
base unit for bowls: 80
cutout for top: 77x48



black J-Granito

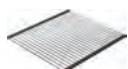
1VJ81N

J-GRANITO

J-GRANITO is a composite material obtained by combining granite and acrylic resins. It brings together the characteristics of natural stone and the protective qualities of polymers, guaranteeing optimum resistance to both high temperatures and knocks, while retaining the original appearance of stone.

ACCESSORIES

7



Roll-Up multi-purpose stainless steel rack

1GSPA

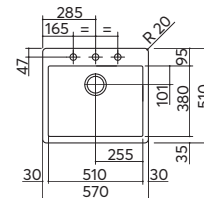
Sinks have a 1-way space-saver trap with dishwasher connection and cardboard packaging. The mixer tap is not included.



built-in J-Granito
57x51
1 bowl with Joy mixer tap

ACCESSORIES:
7

basket strainer waste: 3"½
equipment: Joy black mixer tap with pull-out spray 1RUBJN, fixing clips, overflow, basket strainer waste and plug
tap hole: designed for 3 holes
base unit for bowls: 60
cutout for top: 55x48



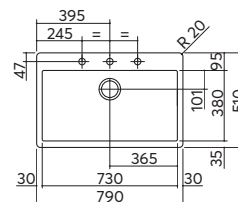
black J-Granito

1VJC61N

built-in J-Granito
79x51
1 bowl with Joy mixer tap

ACCESSORIES:
7

basket strainer waste: 3"½
equipment: Joy black mixer tap with pull-out spray 1RUBJN, fixing clips, overflow, basket strainer waste and plug
bowl size: 1 bowl 73x38x20 h
tap hole: designed for 3 holes
base unit for bowls: 80
cutout for top: 77x48

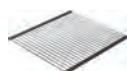


black J-Granito

1VJC81N

ACCESSORIES

7

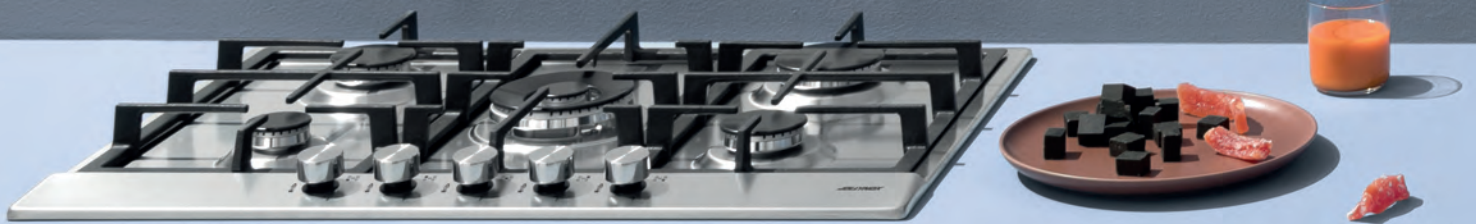


Roll-Up multi-purpose stainless steel rack

1GSPA

Sinks have a 1-way space-saver trap with dishwasher connection and cardboard packaging.





Capacious bowls with accessories to fit any space – guaranteed to please.

R.25 BOWLS



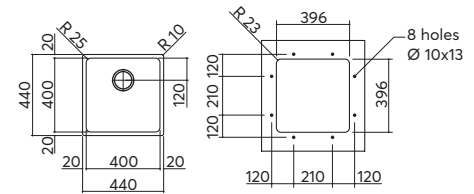




built-in and undermounted st. steel
40x40
1 bowl

ACCESSORIES:
3 4 7 8 9
10 12 13

basket strainer waste: 3.5"
equipment: fixing clips, overflow, basket strainer waste and plug
bowl size: 1 bowl 40x40x20 h
base unit for bowls:
 - **built-in:** 50
 - **undermounted:** 60
cutout for top:
 - **cut out:** 42x42 + notch for overflow
 - **undermounted bowl:** 39.6x39.6 R. 2.3



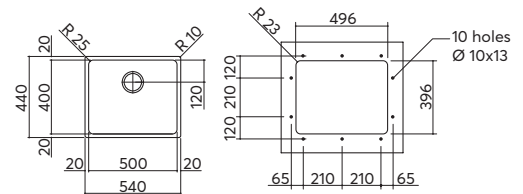
st. steel 1W40



built-in and undermounted st. steel
50x40
1 bowl

ACCESSORIES:
3 4 7 8 9
10 12 13

basket strainer waste: 3.5"
equipment: fixing clips, overflow, basket strainer waste and plug
bowl size: 1 bowl 50x40x20 h
base unit for bowls:
 - **built-in:** 60
 - **undermounted:** 80
cutout for top:
 - **built-in:** 52x42 + notch for overflow
 - **undermounted:** 49.6x39.6 R. 2.3



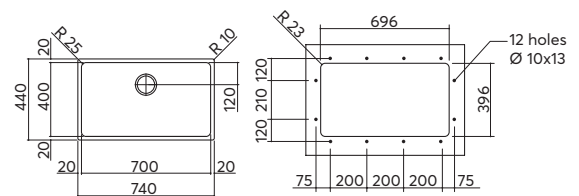
st. steel 1W50



built-in and undermounted st. steel
70x40
1 bowl

ACCESSORIES:
3 4 7 8 9
10 12 13

basket strainer waste: 3.5"
equipment: fixing clips, overflow, basket strainer waste and plug
bowl size: 1 bowl 70x40x20 h
base unit for bowls:
 - **built-in:** 80
 - **undermounted:** 90
cutout for top:
 - **built-in:** 72x42 + notch for overflow
 - **undermounted:** 69.6x39.6 R. 2.3




st. steel 1W70

ACCESSORIES

3

 Polyethylene chopping board
 1TOF26

4

 Chopping board in black HPL
 1TOF26N

7

 Roll-Up multi-purpose stainless steel rack
 1GSPA

8


 Stainless steel colander
 1VOF

9

 Stainless steel colander with removable draining rack
 1VSOF

10

 Stainless steel perforated bowl cover
 1CIVQ

12

 Stainless steel perforated bowl cover with black HPL chopping board
 1CITN

13

 Pop-up plug kit
 1SPF

The bowls have a 1-way trap with dishwasher connection and cardboard packaging.

Bowls

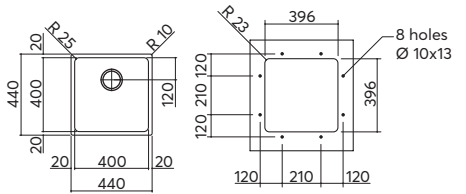
R. 25 Combi



built-in and undermounted st. steel
40x40
1 bowl with Vega mixer tap

ACCESSORIES:
3 4 7 8 9
10 12 13

basket strainer waste: 3.5"
equipment: chrome mixer tap Vega 1RUBMVG with pull-out spray head, fixing clips, overflow, basket strainer waste and plug
bowl size: 1 bowl 40x40x20 h
base unit for bowls:
 - built-in: 50
 - undermounted: 60
cutout for top:
 - cut out: 42x42 + notch for overflow
 - undermounted bowl: 39.6x39.6 R. 2.3



st. steel

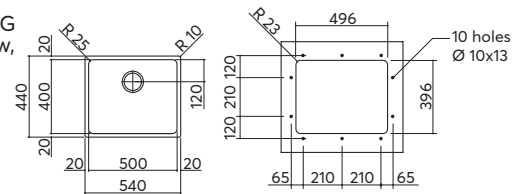
1W40C



built-in and undermounted st. steel
50x40
1 bowl with Vega mixer tap

ACCESSORIES:
3 4 7 8 9
10 12 13

basket strainer waste: 3.5"
equipment: chrome mixer tap Vega 1RUBMVG with pull-out spray head, fixing clips, overflow, basket strainer waste and plug
bowl size: 1 bowl 50x40x20 h
base unit for bowls:
 - built-in: 60
 - undermounted: 80
cutout for top:
 - built-in: 52x42 + notch for overflow
 - undermounted: 49.6x39.6 R. 2.3



st. steel

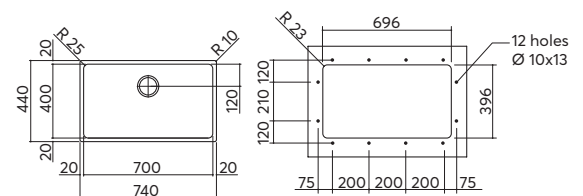
1W50C



built-in and undermounted st. steel
70x40
1 bowl with Vega mixer tap

ACCESSORIES:
3 4 7 8 9
10 12 13

basket strainer waste: 3.5"
equipment: chrome mixer tap Vega 1RUBMVG with pull-out spray head, fixing clips, overflow, basket strainer waste and plug
bowl size: 1 bowl 70x40x20 h
base unit for bowls:
 - built-in: 80
 - undermounted: 90
cutout for top:
 - built-in: 72x42 + notch for overflow
 - undermounted: 69.6x39.6 R. 2.3



st. steel

1W70C

ACCESSORIES

3



Polyethylene chopping board

1TOF26

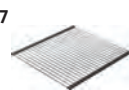
4



Chopping board in black HPL

1TOF26N

7



Roll-Up multi-purpose stainless steel rack

1GSPA

8



Stainless steel colander

1VOF

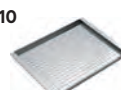
9



Stainless steel colander with removable draining rack

1VSOF

10



Stainless steel perforated bowl cover

1CIVQ

12



Stainless steel perforated bowl cover with black HPL chopping board

1CITN

13



Pop-up plug kit

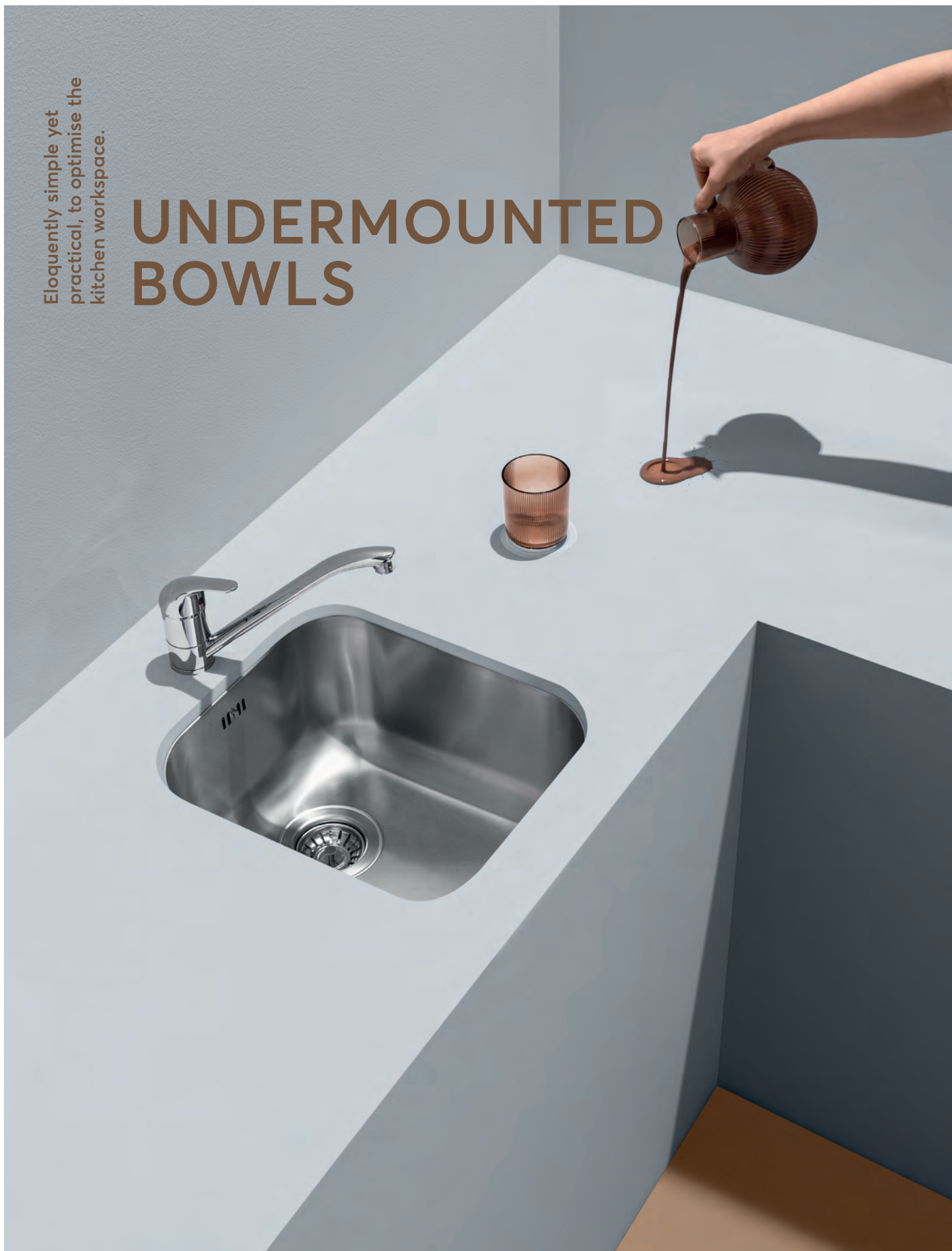
1SPF

The bowls have a 1-way trap with dishwasher connection and cardboard packaging.



Eloquently simple yet practical, to optimise the kitchen workspace.

UNDERMOUNTED BOWLS

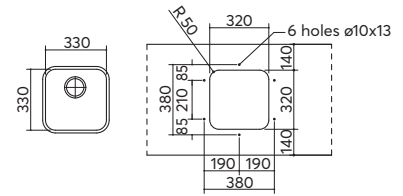




undermounted st. steel
33x33
1 bowl

ACCESSORIES:
13

basket strainer waste: 3.5"
equipment: fixing clips, overflow, basket strainer waste and plug
bowl size: 1 bowl 33x33x20 h
base unit for bowls: 45
cutout for top: 32x32 r. 5



st. steel

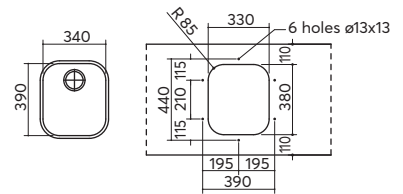
113030S



undermounted st. steel
34x39
1 bowl

ACCESSORIES:
6 13

basket strainer waste: 3.5"
equipment: fixing clips, overflow, basket strainer waste and plug
bowl size: 1 bowl 34x39x19.5 h
base unit for bowls: 50 cm
cutout for top: 33x38 r. 8.5



st. steel

113439S

ACCESSORIES

6



Polished stainless steel basket

1CREIM

13



Pop-up plug kit

1SPF

The bowls have a 1-way trap with dishwasher connection and cardboard packaging.

CIRCULAR BOWLS

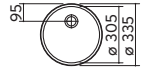
Round in shape and reminiscent of a traditional bowl, but with modern features.





built-in st. steel
 Ø 33.5 h. 18.5
 1 bowl

basket strainer waste: 2"
equipment: overflow hole,
 basket and rubber plug
bowl size: 1 bowl Ø 33.5x18.5 h
base unit for bowls: 40
cutout for top: Ø 31.5 + notch for overflow

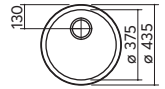


st. steel 1IS335RI



built-in st. steel
 Ø 43.5 h. 17.5
 1 bowl

basket strainer waste: 3.5"
equipment: seals, fixing clips, overflow,
 basket strainer waste and plug
bowl size: 1 bowl Ø 43.5x17.5 h
base unit for bowls: 45
cutout for top: Ø 41.5



st. steel 1IS435RI/3

Circular bowls come with cardboard packaging. The 1IS435RI/3 circular bowl is equipped with a 1-way trap with dishwasher connection.



Practical, efficient
technologies together
with aesthetics.

HOBS





ELECTRIC HOTPLATES
Jollynox electric hotplates don't waste energy. They heat up quickly and maintain a constant temperature. They are ideal for recipes with long cooking times, or for reheating and keeping cooked food warm.

GAS HOBS

Eco-flame burners with a steady flame which provide high heat yields accompany Jollynox hobs, enhancing performance. They optimise energy consumption and reduce toxic substance emissions by more than 50% compared to the legal requirements. The one-piece burners are simple to remove, making them easy to keep clean.



JOLLYNOX



INDUCTION HOBS

Jollynox induction hobs combine a minimalist design with latest-generation technology which offers: quick and evenly distributed heat, precise heat control and improved energy efficiency. They also offer special functions and safety features such as a cooking end timer, pan detection, child safety lock, overflow alarm and automatic switch-off.

CONTROLS

Gas hobs have a knob with an integrated switch, meaning a simple turn is all it takes to light and adjust the flame. The spark plus is inside the burner, away from any liquids which may drip during cooking or when cleaning the top. If the flame accidentally goes out, the rapid safety valve trips immediately.

For induction hobs, use the touch controls to adjust each cooking zone easily and accurately.





A complete collection of sizes and combinations, for all cooking and space requirements.

VEGA AND VEGA PLUS HOBS



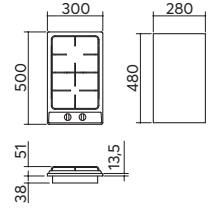




**30 built-in
2 gas burners enamelled pan support**

**ACCESSORIES:
14**

burner caps: enamel
burners: eco-flame, extractable, one-piece
features: automatic ignition and rapid safety valve
cutout for top: 28x48
burners power:
 • 1 auxiliary: 1 kW
 • 1 rapid: 3 kW



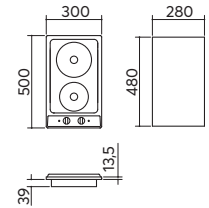
st. steel

1PVG2



**30 built-in
2 heat-protected electric hotplates**

heat-protected rapid electric hotplates
equipment: operating light
maximum absorbed power: 3.5 kW
cutout for top: 28x48
electric hotplates power:
 • 1 electric hotplate Ø 155 mm: 1,5 kW
 • 1 electric hotplate Ø 190 mm: 2 kW



st. steel

1PVG2E

ENAMELLED PAN SUPPORT

Non-deformable, durable and easy to remove.

HEAT-PROTECTED ELECTRIC HOTPLATES

An automatic device halves power if the pan is not fully absorbing the heat produced.

ACCESSORIES

14



Hosepipe (European standard) for combustible gases
 1TFL

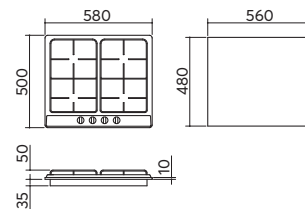


60 built-in
2 gas burners cast iron pan supports

ACCESSORIES:
14

burner caps: cast iron
burners: eco-flame, extractable, one-piece
features: automatic ignition and rapid safety valve
cutout for top: 56x248
burners power:

- 1 auxiliary: 1 kW
- 1 semi-rapid: 1,75 kW
- 1 semi-rapid: 1,4 kW
- 1 rapid: 2,8 kW



st. steel

1PVP64

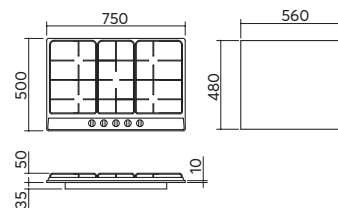


75 built-in
4 gas burners + double ring cast iron pan supports

ACCESSORIES:
14 15

burner caps: cast iron
burners: eco-flame, extractable, one-piece
features: automatic ignition and rapid safety valve
cutout for top: 56x48
burners power:

- 1 auxiliary: 1 kW
- 1 semi-rapid: 1,75 kW
- 1 semi-rapid: 1,4 kW
- 1 rapid: 3 kW
- 1 double ring: 4 kW



st. steel

1PVP75





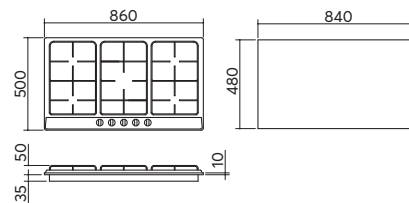


90 built-in
4 gas burners + double ring cast iron pan supports

ACCESSORIES:
14 15

burner caps: cast iron
burners: eco-flame, extractable, one-piece
features: automatic ignition and rapid safety valve
cutout for top: 84x48
burners power:

- 1 auxiliary: 1 kW
- 2 semi-rapid: 1,75 kW
- 1 rapid: 3 kW
- 1 double ring: 4 kW



st. steel

1PVP95

DOUBLE RING

Burner with two flames for faster even cooking.

CAST IRON PAN SUPPORTS

They are particularly solid and improve heat distribution and maintenance. Equipped with protective rubber buffers.

ACCESSORIES

14



Hosepipe (European standard) for combustible gases
 1TFL

15



Cast iron wok adapter
 1RWJ





Cutting-edge technology and energy efficiency, tailored to each kitchen environment.

INDUCTION HOBS



HOBS





30 built-in
2 Touch Control zones

Touch controls

functions: 1-99' cooking end timer, small utensil recognition, automatic pan detection

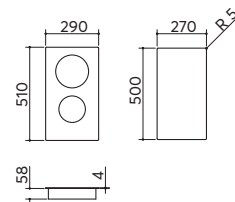
safety devices: child-safety lock, residual heat indicator, overflow alarm and security switch-off

maximum absorbed power: 3.5 kW

hole for top: 27x50 r. 5

induction zones power:

- 1 zone Ø 140 mm: 1,5 kW
- 1 zone Ø 180 mm: 2 kW



black glass ceramic

1PID3

60 built-in
4 Touch Control zones

Touch controls

functions: 1-99' cooking end timer, small utensil recognition, automatic pan detection, power management

safety devices: child-safety lock, residual heat indicator, overflow alarm and security switch-off

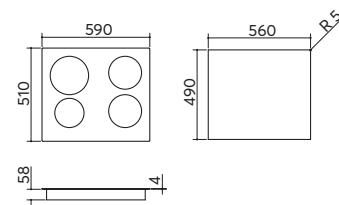
adjustable power levels: 2.5-3.5-4.5-5.5 to 7.2 kW

maximum absorbed power: 7.2 kW

hole for top: 56x49 r. 5

induction zones power:

- 1 zone Ø 160 mm: 1,3 kW
- 2 zones Ø 180 mm: 1,8 kW
- 1 zone Ø 210 mm: 2,3 kW



black glass ceramic

1PID6



POWER MANAGEMENT

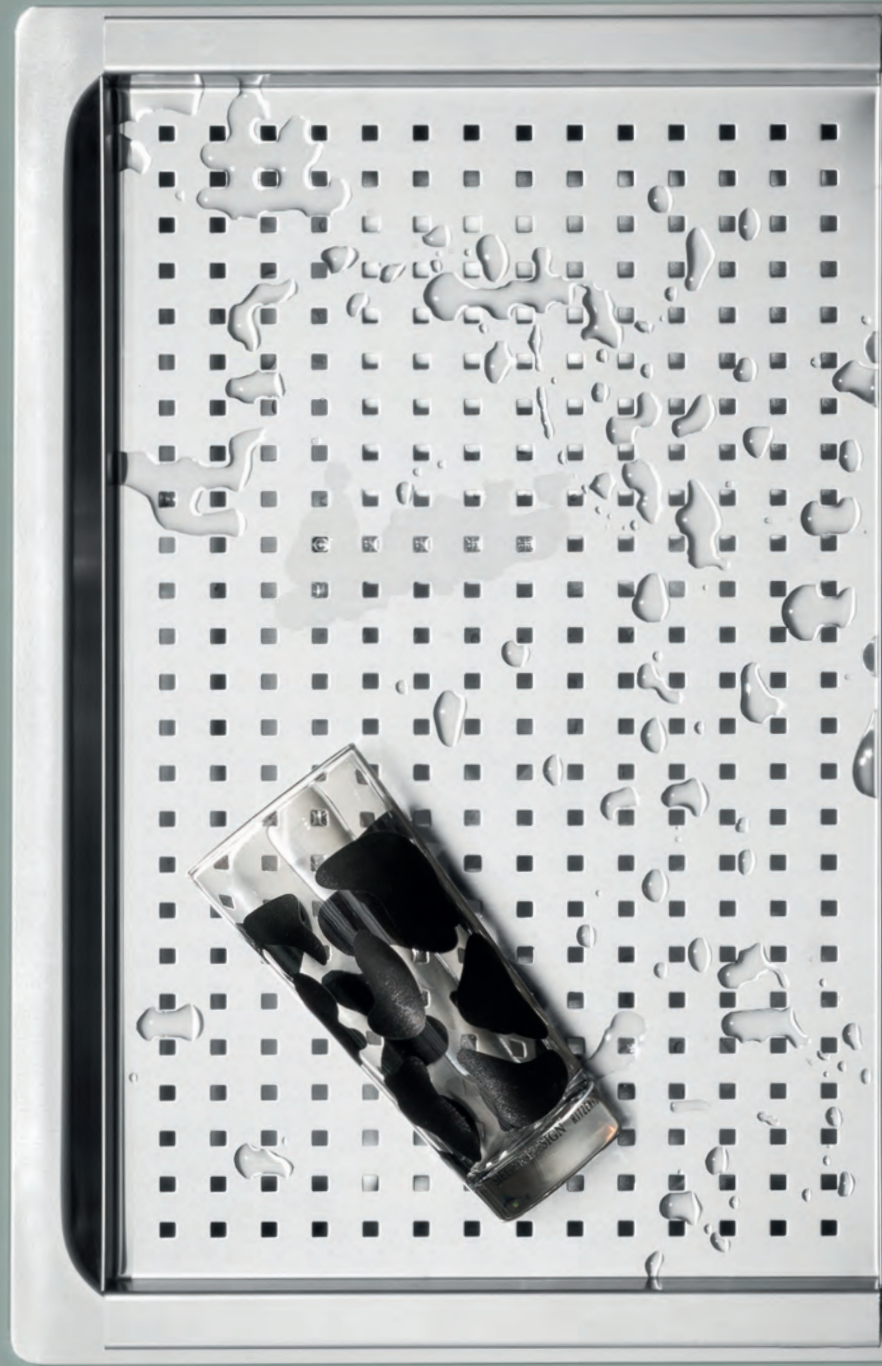
For the 60 cm model, set the maximum power to avoid energy overloads.

TOUCH CONTROLS

Adjust each cooking zone on the hob independently, easily and accurately.

Solutions that leave room
for functionality and
creativity in the kitchen.

TAPS AND ACCESSORIES







Vega
mixer tap
1RUBMVG

DESIGN
Jollynox offers a
comprehensive choice of
taps in designs to match
all sink models.

Ring
mixer tap
1RUBRG



JOLLYNOX



Quadro
mixer tap
1RUBMQD

QUALITY
Jollynox taps are
guaranteed to work
perfectly and have a long
service life.



Life mixer tap
1RUBLF



Top
mixer tap
1RUBMT

FINISHES

The natural shine of a chrome finish or the elegance of all black: two different options are available to satisfy all tastes and styles.



Mixer tap
Pull-out spray head
1RUBMD

Sottofinestra
mixer tap
1RUBMSF



SUSTAINABILITY
The high quality of Jollynox taps is also important for the environment. Boasting a precise flow, they ensure not a single drop of precious water is wasted.



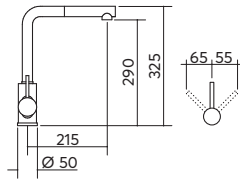
Mixer tap
1RUBM



Vega mixer tap



equipment: pull-out spray head
cartridge type: ceramic discs
tap rotation: 360°
tap hole: Ø 35 mm



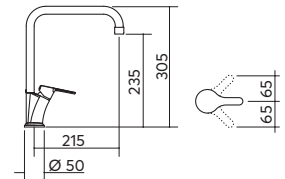
chromed

1RUBMVG

Life mixer tap



cartridge type: ceramic discs
tap rotation: 360°
tap hole: Ø 35 mm



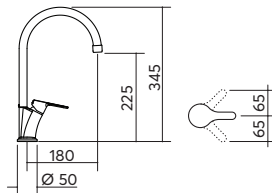
chromed

1RUBLF

Ring mixer tap



cartridge type: ceramic discs
tap rotation: 360°
tap hole: Ø 35 mm



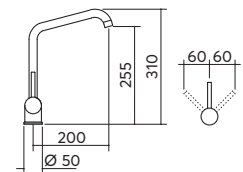
chromed

1RUBRG

Quadro mixer tap



cartridge type: ceramic discs
tap rotation: 360°
tap hole: Ø 35 mm



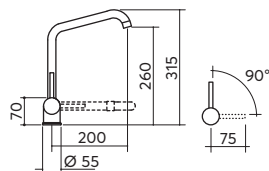
chromed

1RUBMQD

Sottofinestra mixer tap



equipment: swivel spout,
height fully closed 7 cm
cartridge type: ceramic discs
tap rotation: 360°
tap hole: Ø 35 mm



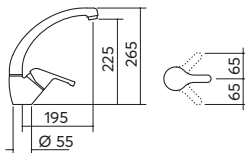
chromed

1RUBMSF

Top mixer tap



cartridge type: ceramic discs
tap rotation: 360°
tap hole: Ø 35 mm



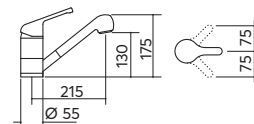
chromed

1RUBMT

Mixer tap pull-out spray head



equipment: double jet pull-out spray
head
cartridge type: ceramic discs
tap rotation: 120°
tap hole: Ø 35 mm



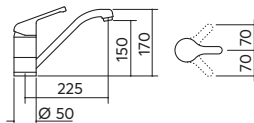
chromed

1RUBMD

Mixer tap



cartridge type: ceramic discs
tap rotation: 360°
tap hole: Ø 35 mm



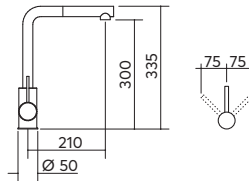
chromed

1RUBM

Joy mixer tap



equipment: pull-out spray head
cartridge type: ceramic discs
tap rotation: 360°
tap hole: Ø 35 mm



black

1RUBJN



TAPS AND ACCESSORIES



Stainless steel colander
with removable
draining rack
1VSOE

ACCESSORIES

With Jollynox, the kitchen cooking and washing areas are functional and well organised, and have an exceptional finish.

Accessories such as bowl covers, chopping boards, baskets, racks, colanders and a pop-up plug kit all add extra functions to the sink area, for preparing ingredients and washing dishes.

A collection of professional stainless steel cleaning products completes the range.

Black HPL chopping
board
1TOF26N





Polyethylene
chopping board
1T0F26

Stainless steel
perforated bowl cover
1CIVQ



Polished stainless
steel basket
1CREI



Stainless steel
perforated bowl cover
1CI91



Stainless steel
perforated bowl
cover with black HPL
chopping board
1CITN

Pop-up plug kit
1SPF



Roll-up multi-purpose
stainless steel rack
1GSPA



1



Iroko chopping board

chopping board dimensions: 35x40 1TRE

2



Polyethylene chopping board

chopping board dimensions: 35x40 1TREP

3



Polyethylene chopping board

chopping board dimensions: 26x43 1TOF26

4



Chopping board in black HPL

chopping board dimensions: 26x43 1TOF26N

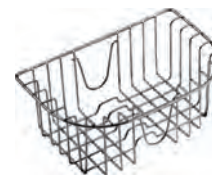
5



Polished stainless steel basket

33x37.5x15.4 h basket 1CREI

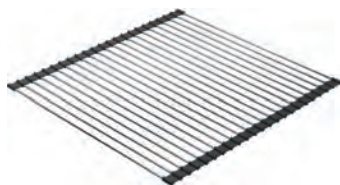
6



Polished stainless steel basket

23.5x36.5x15 h basket 1CREIM

7



Roll-Up multi-purpose stainless steel rack

rack dimensions: 46x44 1GSPA

8



Stainless steel colander

colander dimensions: 15x43x12 h 1VOF

9



Stainless steel colander with removable draining rack

colander dimensions: 25x43x7 h 1VSOF

10



Stainless steel perforated bowl cover

bowl cover dimensions: 25x43
1CIVQ

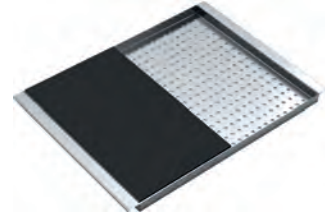
11



Stainless steel perforated bowl cover

bowl cover dimensions: 35x40
1CI91

12



Stainless steel perforated bowl cover with black HPL chopping board

bowl cover dimensions: 25x43
1CITN

13



Pop-up plug kit

1SPF



St. steel cover plug

1TCI

Sink accessories



Food waste disposer

features: stainless steel shredder components, shredding chamber and drain in anti-corrosive material, nylon and fibreglass basket, standard motor, powered continuously, motor 200-240V/50-60Hz, sound-proofing, energy rating 1, motor with permanent lubricant, manual reset/protection against overload, plastic pneumatic starter supplied, ø 35 mm control hole

power: 1/2 HP, 370 W

1DSEC2

Traps

1-way with dishwasher connection 1S1

2-way with dishwasher connection 1S2

1-way space saver with dishwasher connection 1S1A

2-way space saver with dishwasher connection 1S2A

Hob accessories

14



Hosepipe (European standard) for combustible gases

length 2 metres

1TFL

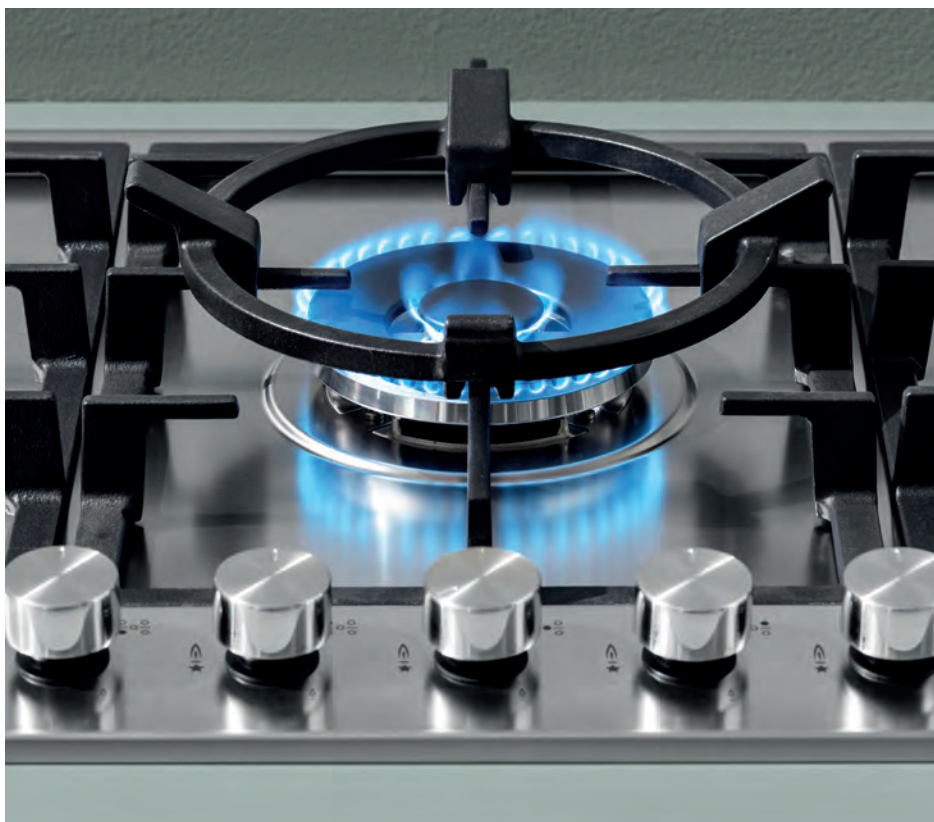
15



Cast iron wok adapter

for hob with double ring burner

1RWJ



Cleaning products



Easy Clean professional cleaning cream

- professional stainless steel cleaning cream
- cleans, polishes and protects stainless steel
- ecological formula
- 150 g each

package of 3	1ECO3
--------------	-------

package of 12	1ECO12
---------------	--------



Multi Clean professional multipurpose detergent

- professional multipurpose detergent, suitable for daily cleaning
- removes dirt quickly on all washable hard surfaces
- ecological formula
- contents 200 ml each

package of 3	1MC3
--------------	------

package of 12	1MC12
---------------	-------



Easy Clean professional microfibre cloth

- antibacterial
- cleans and sanitises in one go on all washable hard surfaces
- dimensions: 40x40 cm

1 box	1PMA
-------	------

package of 3	1PMA3
--------------	-------



Cleaning Box

The Professional Cleaning Box contains:

- 1x Easy Clean 150 g
- 1x Multiclean 200 ml
- 1x Easy Clean microfibre cloth

1 box	1CBK
-------	------



GENERAL INFORMATION



Weights and volumes - search by code

Code	Page	Dimensions of packaging (cm)	Volume (m ³)	Gross weight (kg)
1CBK	91	27x26x11	0,01	0,7
1CI91	89	50x39x2	0,01	0,5
1CITN	89	50,5x28x8	0,01	1,9
1CIVQ	89	50,5x28x8	0,01	1,1
1CREI	88	37,5x33x12,5	0,02	1
1CREIM	88	37x24x14	0,01	1
1DSEC2	90	40,5x22,5x22,5	0,02	7,8
1ECO12	91	27x26x11	0,01	3,1
1ECO3	91	27x26x11	0,01	0,9
1GSPA	88	50x8x8	0,03	0,8
1I100DK	36	51x103x21	0,11	6,2
1I100SK	36	51x103x21	0,11	6,2
1I120/2.91DK	37	51x119x21	0,13	6,9
1I120/2.91SK	37	51x119x21	0,13	6,9
1I3030S	55	39x44x25	0,04	2,8
1I3439S	55	39x44x25	0,04	2,4
1I60/1K	41	51x62x21	0,06	4,7
1I60K	35	51x62x21	0,06	4,7
1I80/1.91DK	35	50x81,5x21	0,08	4,5
1I80/1.91SK	35	50x81,5x21	0,08	4,5
1I80/2.91K	35	50x81,5x21	0,08	5,7
1I90/1.91DK	36	51x89x21	0,09	5
1I90/1.91SK	36	51x89x21	0,09	5
1I90/2.91K	36	51x89x21	0,09	5,9
1I9090/2.913	37	87x84,5x22	0,16	9,2
1IS335RI	57	39x44x25	0,04	2
1IS435RI/3	57	49x49x22	0,05	2,7

Code	Page	Dimensions of packaging (cm)	Volume (m ³)	Gross weight (kg)
1LLF120/2D3K	28	51x119x21	0,13	6,9
1LLF120/2S3K	28	51x119x21	0,13	6,9
1LLF453K	27	50x47x21	0,05	3,2
1LLF80/1D3K	27	50x81,5x21	0,08	4,5
1LLF80/1S3K	27	50x81,5x21	0,08	4,5
1LLF80/23K	27	50x81,5x21	0,08	5,7
1LLF90/1D3K	28	51x89x21	0,09	5
1LLF90/1S3K	28	51x89x21	0,09	5
1LLF90/23K	28	51x89x21	0,09	5,9
1LLFC12D	30	51x119x21	0,13	8,5
1LLFC12S	30	51x119x21	0,13	8,5
1LLFC91D	30	51x89x21	0,09	6,6
1LLFC91S	30	51x89x21	0,09	6,6
1LLFC92	30	51x103x21	0,11	7,5
1LVGC12D	38	51x119x21	0,13	8,6
1LVGC12S	38	51x119x21	0,13	8,6
1LVGC91D	38	51x89x21	0,09	6,7
1LVGC91S	38	51x89x21	0,09	6,7
1LVGC92	38	51x103x21	0,11	7,6
1MC12	91	27x26x11	0,01	3,1
1MC3	91	27x26x11	0,01	1,4
1PID3	73	59x38,5x12,5	0,03	6
1PID6	73	59x67x12	0,05	10,2
1PMA	91	27x26x11	0,01	0,3
1PMA3	91	27x26x11	0,01	0,5
1PVG2	65	57x40x13	0,03	5
1PVG2E	65	57x40x13	0,03	5,8

Code	Page	Dimensions of packaging (cm)	Volume (m ³)	Gross weight (kg)
1PVP64	66	65x59x12,5	0,05	9,8
1PVP75	66	80x58x12,5	0,06	12,5
1PVP95	68	93x58x12,5	0,07	14,5
1RUBJN	83	46x26x7	0,01	2
1RUBLF	81	41x26x7	0,01	1,6
1RUBM	82	42x19,5x7,5	0,01	1,2
1RUBMD	82	42x19,5x7,5	0,01	1,8
1RUBMQD	81	37,5x20x8,5	0,01	1,7
1RUBMSF	82	42x19,5x7,5	0,01	2,2
1RUBMT	82	42x19,5x7,5	0,01	1,4
1RUBMVG	81	46x26x7	0,01	2
1RUBRG	81	41x26x7	0,01	1,7
1RWJ	90	27x26x11	0,01	1
1S1	90	27x26x12	0,01	0,2
1S1A	90	27x26x12	0,01	0,3
1S2	90	27x26x12	0,01	0,4
1S2A	90	27x26x12	0,01	0,5
1SPF	89	35x31x8	0,01	1
1TCI	89	5x5x5	0,001	0,1
1TFL	90	30x27x5	0,01	1
1TOF26	88	43x26x2	0,01	2
1TOF26N	88	51x41x8	0,02	3,2
1TRE	88	40x35x2	0,01	2
1TREP	88	40x35x2	0,01	2
1VJ61N	45	68x58x29	0,11	13,2
1VJ81N	45	86,5x58x29	0,14	16,3
1VJC61N	46	68x58x29	0,11	15,2

Code	Page	Dimensions of packaging (cm)	Volume (m ³)	Gross weight (kg)
1WJC81N	46	86,5x58x29	0,14	18,3
1VOF	88	50x16x13	0,01	1,4
1VSOF	88	50x28x8	0,01	2
1W40	51	49,5x49,5x27	0,07	6,4
1W40C	52	59,5x49,5x27	0,08	8,4
1W50	51	59,5x49,5x27	0,08	7,2
1W50C	52	59,5x49,5x27	0,08	9,2
1W70	51	79,5x49,5x27	0,11	9,1
1W70C	52	79,5x49,5x27	0,11	11,1

Certifications

Barazza srl is certified according to UNI EN ISO 9001 and 14001 standards. In addition to UNI EN ISO 9001 certification, which guarantees quality control and production process optimisation, as well as customer satisfaction as the number one concern, Barazza srl also complies with UNI EN ISO 14001. By doing so, the aim is to keep active and improve its environmental management system, handling the impact of its work efficiently and in an eco-friendly way, optimising natural and energy resources and implementing accurate control systems for disposing of waste and preventing environmental pollution.



Information service

Jollynox has an information service to help you quickly with anything concerning:

- product information
- troubleshooting
- authorised technical assistance centres
- instruction booklets
- spare parts and accessories

To contact the information service directly:

Telephone +39 0438 62888

Fax +39 0438 64901

E-mail customer@barazzasrl.it

At www.jollynox.it you can also find:

- online catalogue
- new product information
- an up-to-date list of authorised technical assistance centres.

Artistic direction: **Genny Canton Studio**
Images: **Riccardo Munarin**
Styling and graphics: **Genny Canton Studio**
Technical layout: **Artlinea – PN**
Separations: **Studio Emmequadro**
Printing: **Grafiche Antiga Spa**

Jollynox reserves the right to make any changes, at any time and without notice, in order to improve its products. The colours shown are by way of example only. Reproduction of this catalogue, even in part, for commercial purposes, without specific authorisation from Jollynox, is strictly forbidden. The prices in the price list are to be considered as net of VAT, transport costs and any WEEE eco-contributions.

JOLLYNOX

Barazza s.r.l.
Via Risorgimento, 14
31025 Sarano di S.Lucia di Piave
Treviso Italy
T +39 0438 62888
F +39 0438 64901
info@barazzasrl.it
jollynox.it