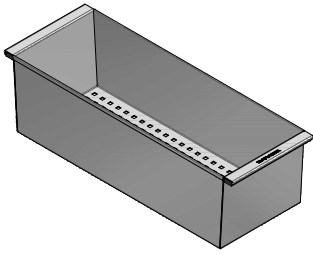


1VOF

DESCRIZIONE Vaschetta forata in acciaio inox
DESCRIPTION Stainless steel colander

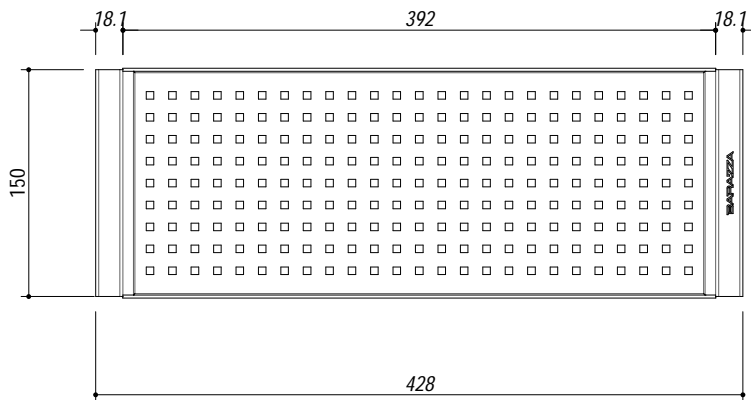
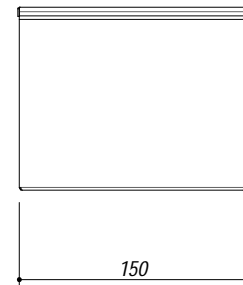
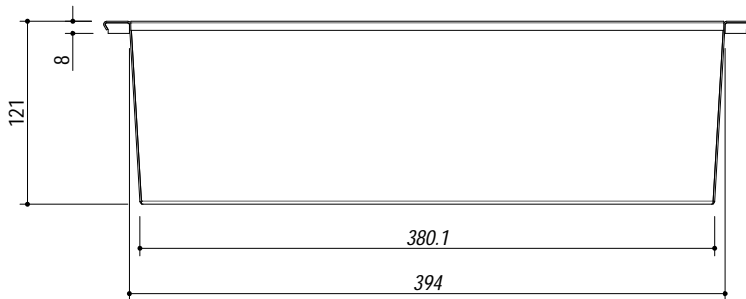
PESO LORDO 1.4 kg
GROSS WEIGHT

DIMENSIONI IMBALLO 500x160x130 mm
PACKAGING DIMENSIONS



ACCIAIO INOX
Stainless steel

- Disponibile per Vasche R25 (cod. 1W40 - 1W50 - 1W70) e Vasche R25 Combi (cod. 1W40C - 1W50C - 1W70C)
 - Available for R25 bowl (cod. 1W40 - 1W50 - 1W70) and R25 Combi bowl (cod. 1W40C - 1W50C - 1W70C)



SCALA DISEGNO 1:5
DRAWING SCALE



TUTTE LE MISURE IN mm
ALL MEASURES IN mm

TOLLERANZA LINEARE: ± 0.5 mm
LINEAR TOLERANCE

TOLLERANZA ANGOLARE: ± 0.2 °
ANGULAR TOLERANCE

PER QUALSIASI CONTESTAZIONE SI FARA' RIFERIMENTO ESCLUSIVAMENTE A QUESTO DISEGNO
 For any dispute the company will refer exclusively to this drawing

BARAZZA Barazza s.r.l. - Via Risorgimento, 14 - 31025 Sarano di S. Lucia di P. (TV) Italy
 Tel. +390438/62888 - Fax +390438/64901 - info@barazzasrl.it - www.barazzasrl.it
 Documento di proprietà aziendale. La Società tutelerà i propri diritti a termini di legge.

