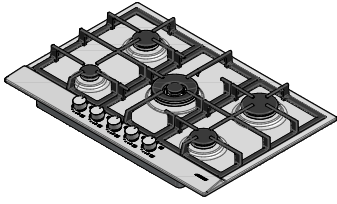


## 1PVP75

**DESCRIZIONE** Piano Cottura Vega Plus incasso da 75 per base da 60 - 5 gas  
**DESCRIPTION** 75cm Vega Plus built-in hob for 60cm base unit - 5 gas burner

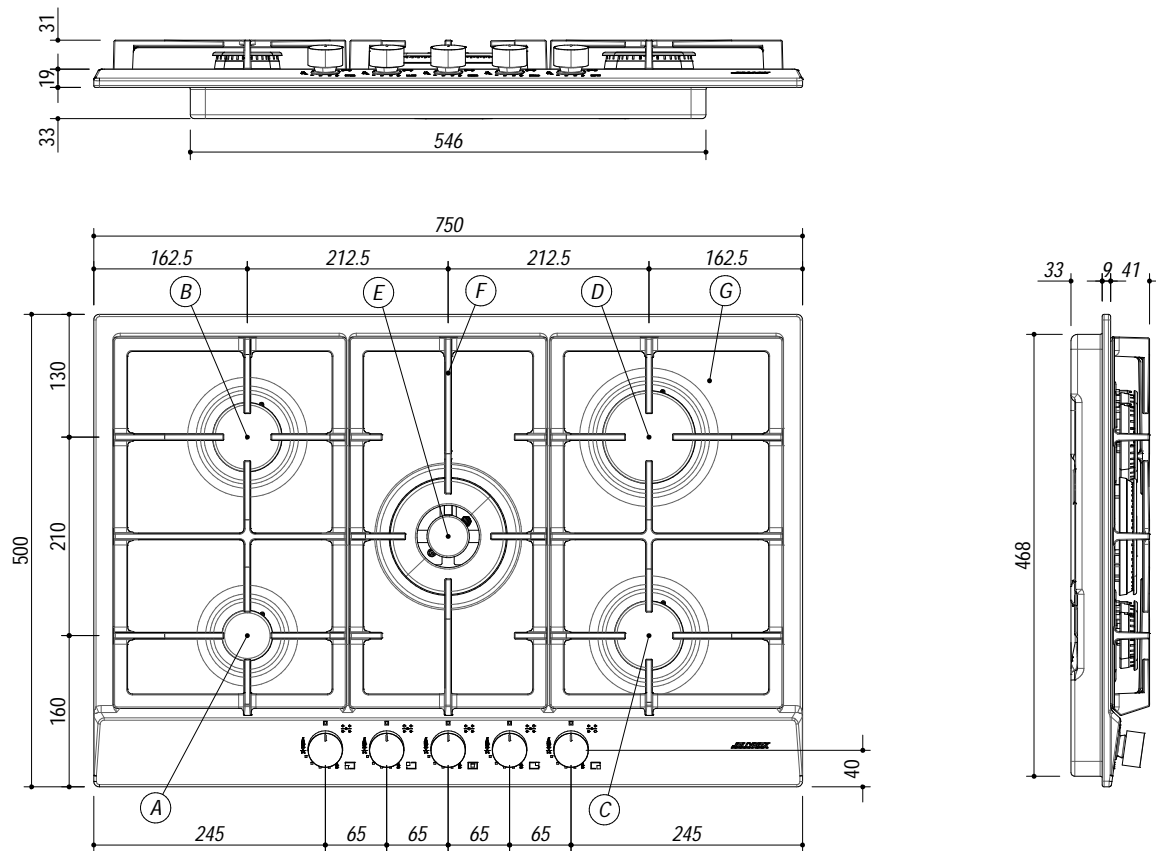
**PESO LORDO** 12.5 Kg  
**GROSS WEIGHT**

**DIMENSIONI IMBALLO** 800 x 580 x 125 mm  
**PACKAGING DIMENSIONS**



- (A) BRUCIATORE AUSILIARIO 1kW *AUXILIARY BURNER*
- (B) BRUCIATORE SEMIRAPIDO 1,75kW *SEMI RAPID BURNER*
- (C) BRUCIATORE SEMIRAPIDO 1,4kW *SEMI RAPID BURNER*
- (D) BRUCIATORE RAPIDO 2,8kW *RAPID BURNER*
- (E) BRUCIATORE DOPPIA CORONA 4kW *DOUBLE RING BURNER*
- (F) ALLACCIAMENTO ELETTRICO *ELECTRICAL CONNECTION*
- (G) CONNESSIONE GAS *GAS CONNECTION*

- Griglie e spartifiamma: Ghisa (*Cast iron pan support and burner caps*)
- Bruciatori: Eco fiamma, monopezzo estraibili (*Eco flame burner, removable one-piece*)
- Caratteristiche: Accensione elettronica una mano e valvola rapida di sicurezza (*Features: one hand electronic ignition and rapid safety valve*)
- Incasso: 56x48 cm (*Built-in: 56x48cm*)



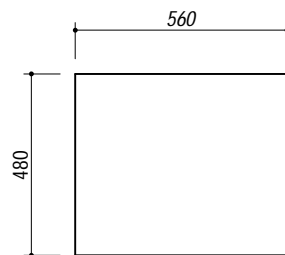
**SCALA DISEGNO** 1:10  
**DRAWING SCALE**

**TUTTE LE MISURE IN mm**  
**ALL MEASURES IN mm**

**TOLLERANZA LINEARE:** ± 0.5 mm  
**LINEAR TOLERANCE**

**TOLLERANZA ANGOLARE:** ± 0.2 °  
**ANGULAR TOLERANCE**

**FORATURA PER INSTALLAZIONE AD INCASSO**  
**BUILT-IN CUTOUT FOR TOP**



1:20