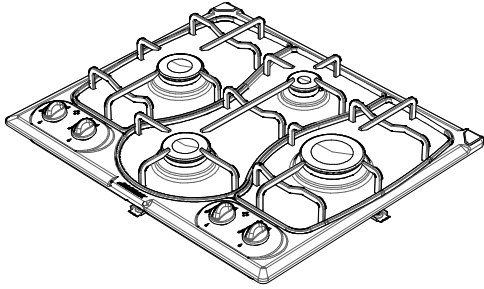


## 1PI400MVE

**DESCRIZIONE** Piano Cottura OMNIA incasso da 60 - 4 gas + griglie in piattina  
**DESCRIPTION** OMNIA 60 cm built-in 4 gas burners + enamel pan support

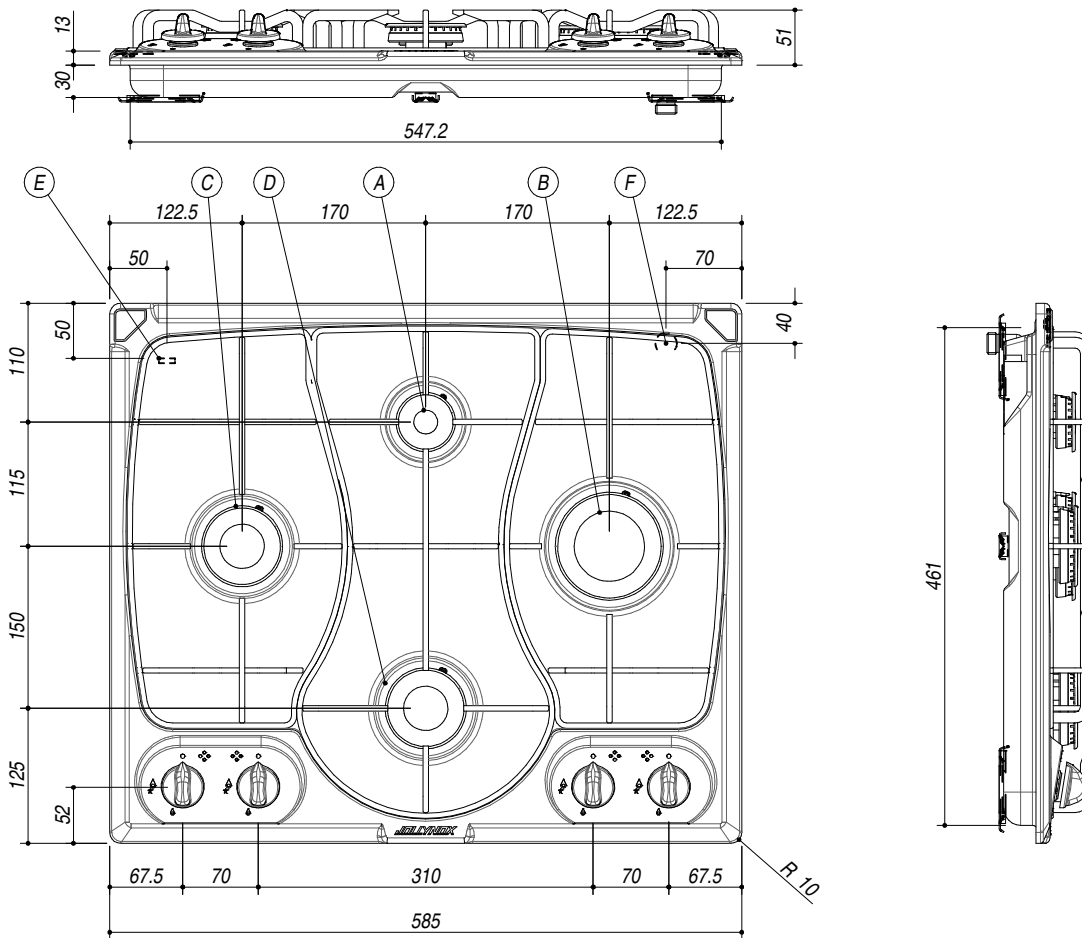
**PESO LORDO** 9.9 Kg  
**GROSS WEIGHT**

**DIMENSIONI IMBALLO** 640x560x130 mm  
**PACKAGING DIMENSIONS**



- (A) BRUCIATORE AUSILIARIO: 1kW AUXILIARY BURNER
- (B) BRUCIATORE RAPIDO: 3 kW RAPID BURNER
- (C) BRUCIATORE SEMIRAPIDO: 1.75 kW SEMIRAPID BURNER
- (D) BRUCIATORE SEMIRAPIDO: 1.75 kW SEMIRAPID BURNER
- (E) ALLACCIAMENTO ELETTRICO ELECTRICAL CONNECTION
- (F) CONNESSIONE A GAS GAS CONNECTION

- Spartifiamma: smaltati (Burner caps: enamel)
- Bruciatori: eco-fiamma, monopezzo estraibili (Burners: eco-flame, extractable, one piece)
- Caratteristiche: predisposizione coperchio, accensione elettronica una mano e valvola rapida di sicurezza (Features: arrangement for cover installation, automatic ignition and rapid safety valve)



**SCALA DISEGNO** 1:10  
**DRAWING SCALE**

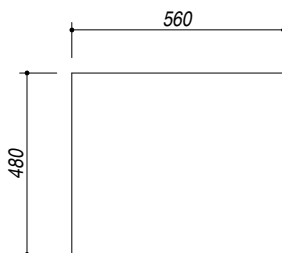


**TUTTE LE MISURE IN mm**  
**ALL MEASURES IN mm**

**TOLLERANZA LINEARE: ± 0.5 mm**  
**LINEAR TOLERANCE**

**TOLLERANZA ANGOLARE: ± 0.2 °**  
**ANGULAR TOLERANCE**

**FORATURA PER INSTALLAZIONE AD INCASSO**  
**BUILT-IN CUTOUT FOR TOP**



1:15